

1

2

3

4

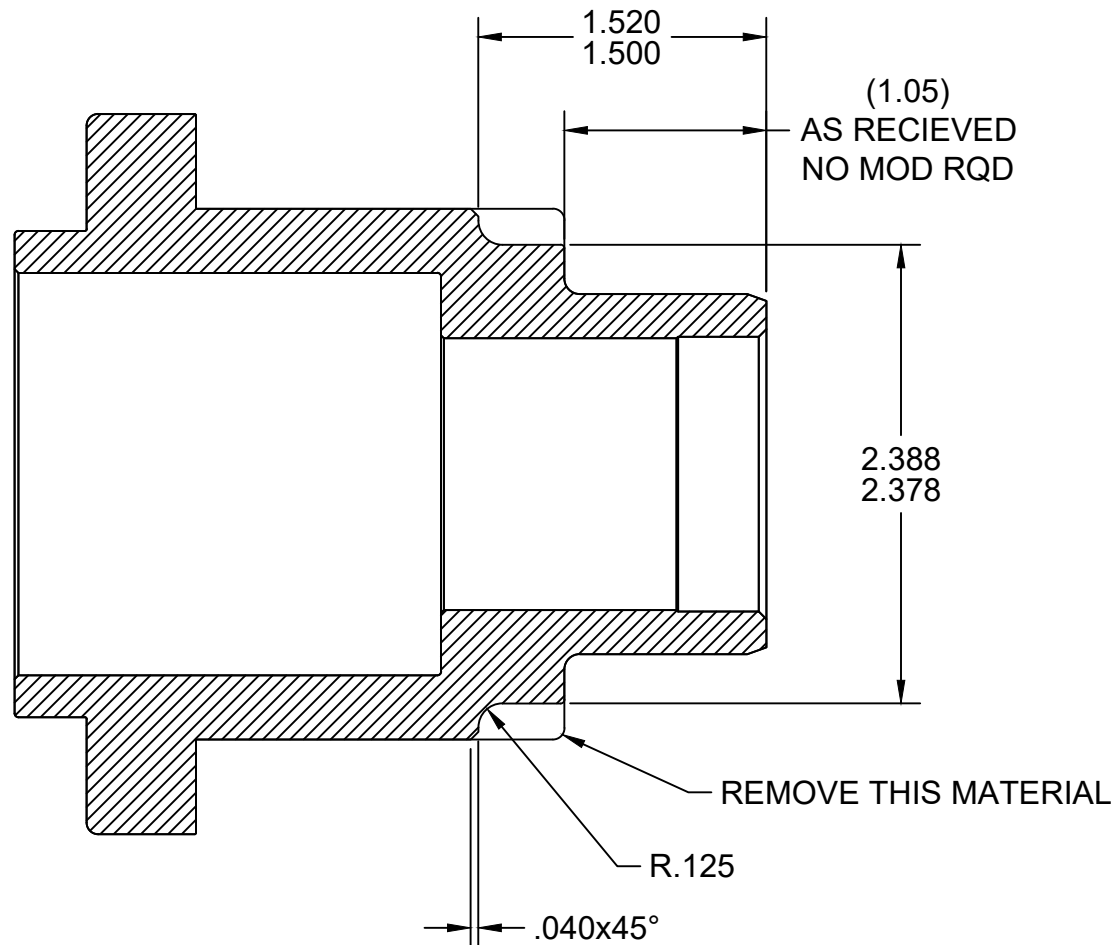
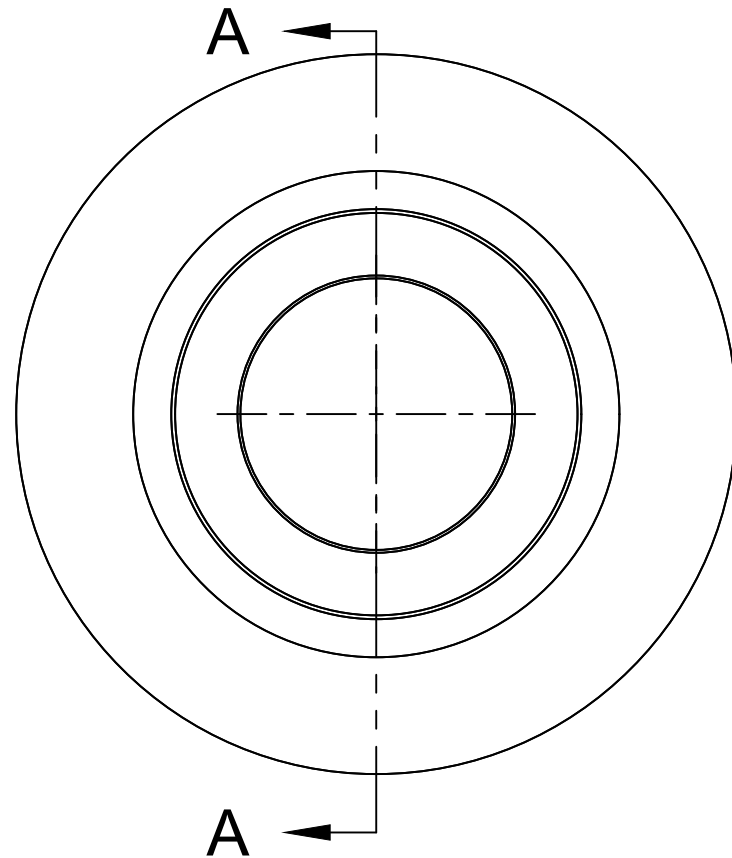
A

B

C

D

E



SECTION A-A
SCALE 1:1

UNLESS OTHERWISE SPECIFIED:

- CAD MODEL CONTROLS DIMS
- CORNER RADII SHOWN SHARP R0.010 MAX
- GENERAL TOLERANCE TO BE ±0.005"
- ASSEMBLY TO BE FREE OF BURRS AND SHARP EDGES
- DIMS SHOWN ARE POST COATING/ANODIZE
- SURFACE FINISH CALL OUT: RMS, MICRO-INCH

MATERIAL: ATI Hub

FINISH:

ATI Hub Modification: Clearance Cut for Indy Power Products Oil Pumps

- Ø 2.378/2.388 OD Cut
- 1.500/1.520 From Rear Face of Hub
- R.125 Blend Rad
- .040 Chamfer

2	1	All	REDEFINED CLEARANCE CUT	4-APR-2021	JR
1			Release	17-Jan-2021	JR
REV	SHEET	LOC	DESC	DATE	BY

REVISIONS

<p>THIS DRAWING AND ANY INTELLECTUAL PROPERTY RIGHTS THEREIN ARE PROPERTY OF NJR ENTERPRISES AND NO LICENSES ARE GRANTED UNDER THOSE RIGHTS</p> <p>PART OF NJR ENTERPRISES INDIANAPOLIS, IN USA</p>	PROJECT		Seven Three Damper Hub		
	TITLE		ATI Hub Modify to Clear IPP Oil Pump		
	PART REFERENCE		10-1156 ATI Hub Modify		
APPROVED	SIZE	PART NO	REV LEVEL		
CHECKED	B	10-1156			
DRAWN	Jim Ryder	1/17/2022	SCALE 1:1	WEIGHT	SHEET 1/1